

PRAVANA®



ChromaSilk™
COLLECTION

Instructions and Color Conversions Guide

ChromaSilk™

CREME HAIR COLOR

Prepare to learn about the fastest growing hair color in the nation, with more salons making the switch than any other brand. With more than 125 shades, including 28 market-leading creative colors, ChromaSilk's superior dye formula ensures complete gray coverage and is enriched with pure silk and keratin amino acids, providing unmatched shine, silkiness and long-lasting color. So what are you waiting for? Isn't it time you experienced undisputed performance, trailblazing color innovation and seamless color transition at an unrivaled value?





PRAVANA COLOR COLLECTION

WHAT DOES THE PRAVANA HAIR COLOR SYSTEM INCLUDE?



CHROMASILK

125+ shades of silk and keratin-based creme colors that perform as both permanent and no-lift demi-permanent colors.



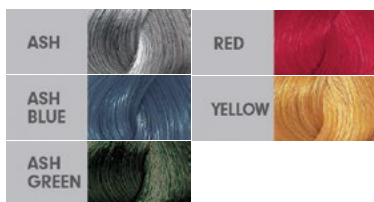
ULTRA HI-LIFTS

6 shades to lift greater than ever and tone in one easy step.



VIVIDS COLLECTION

12 VIVIDS, 5 NEONS, 5 PASTELS and 6 LOCKED-IN vibrant and long-lasting semi-permanent colors.



COLOR CORRECTORS AND ADDITIVES

5 shades to enhance or neutralize color formulations.



CREME DEVELOPERS

5 volumes ranging from Zero Lift to 40 Volume to provide a complete range of processing options.



PURE LIGHT POWER LIGHTENER

For traditional lightening, lift 7 levels and beyond while preserving the integrity of the hair.



PURE LIGHT BALAYAGE LIGHTENER

A lightener created specifically for the art of balayage and foil-free lightening with up to 5 levels of gentle, sun-kissed lift. Three Pure Light Balayage Activators available in Low, Medium or High for the most effective balayage consistency.



000 LIGHTENING BOOSTER

Offering maximum un-toned lift attainable without the use of bleach.



SILK DEGREES SHINE TREATMENT

Semi-permanent shine treatment and pre-VIVIDS application treatment.



ARTIFICIAL HAIR COLOR EXTRACTOR

No bleaching agents, formaldehyde or ammonia to gently extract only artificial oxidative hair color dyes without lifting the natural base color of the hair.



ChromaSilk™

WHAT MAKES CHROMASILK
HAIR COLOR SUPERIOR TO
ANY OTHER HAIR COLOR?



UNMATCHED VERSATILITY

ChromaSilk's low-ammonia formula allows users to mix the color with PRAVANA Zero Lift Creme Developer to create demi-permanent, no-lift hair color from any of the 125+ ChromaSilk Creme Hair Colors.

UNBELIEVABLE PERFORMANCE

Hydrolyzed silk amino acids act as "color carrying agents" to help drive color deep into the hair fiber, providing unmatched coverage, color vibrancy and durability and 100% gray coverage. Keratin amino acids provide protection, strength and brilliant shine.

UNPARALLELED VALUE

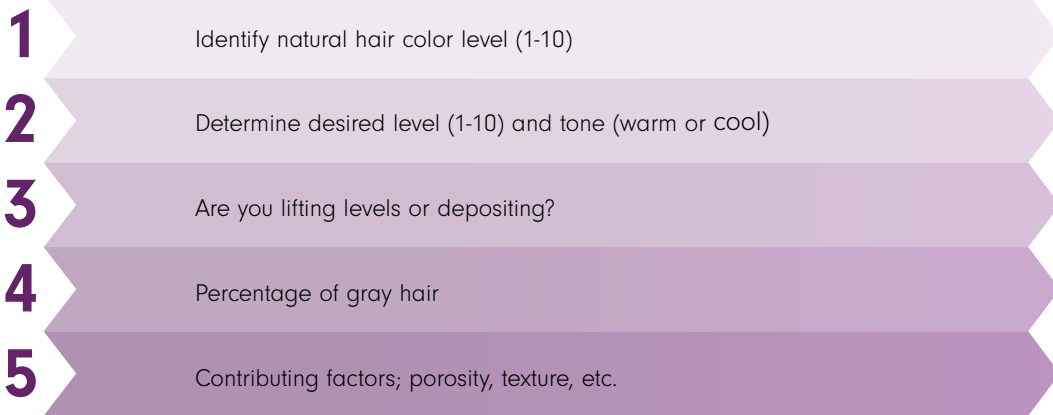
ChromaSilk's 3 oz. tube coupled with 1:1½ parts mixing ratio provides almost 50% more color (7.5 oz. mixed color) at a lower price than most conventional 2 oz. color tubes with a 1:1 parts mixing ratio (4 oz. mixed color). Couple this with the ability to stock just one color for both your demi-permanent and permanent hair color needs and there is no other logical hair color option!

COLOR THEORY

THERE ARE FIVE ESSENTIAL STEPS TO SUCCESSFUL HAIR COLORING:

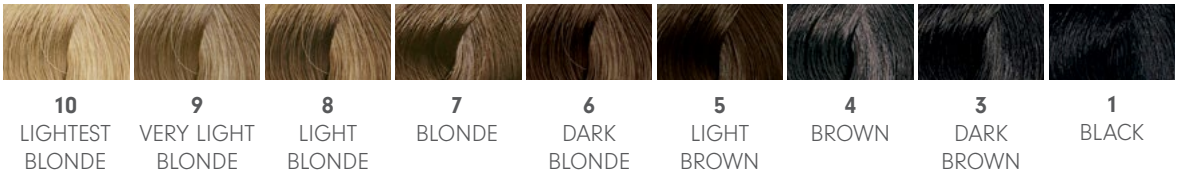


PRAVANA'S 5 STEPS OF FORMULATION ARE AS FOLLOWS:



1 IDENTIFYING THE NATURAL HAIR COLOR LEVEL

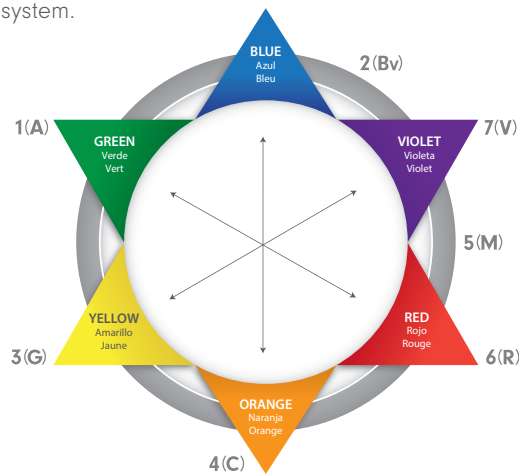
The first step in any hair color procedure is to establish the level of the natural pigment. PRAVANA relies on the traditional international 10 level system to determine and categorize the lightness or darkness of the natural hair color.



2 DETERMINING DESIRED LEVEL AND TONE

PRAVANA ChromaSilk color boxes and tubes feature an American-Style alpha-numeric system to indicate color tones for the convenience of those more familiar with this system.

LEVELS	COLOR FAMILY	NUMBER	BASE TONES
10 ULTRA LIGHT BLONDE	Naturals		Slight Blue
9 VERY LIGHT BLONDE	Ash	1	Green
8 LIGHT BLONDE	Beige	2	Blue Violet
7 BLONDE	Golden	3	Gold
6 DARK BLONDE	Copper	4	Orange
5 LIGHT BROWN	Mahogany	5	Violet Red
4 BROWN	Red	6	Red
3 DARK BROWN		7	Violet



3A LIFTING LEVELS OR DEPOSITING?

HOW DO I MIX AND PROCESS CHROMASILK HAIR COLOR?

MIXING RATIO 1 : 1½

ChromaSilk Creme Hair Color comes in 90 ml tubes and is mixed at 1 : 1½ ratio of creme color to developer (example - 2 oz. of color : 3 oz. of developer or 10 g. of color : 15 g. of developer).

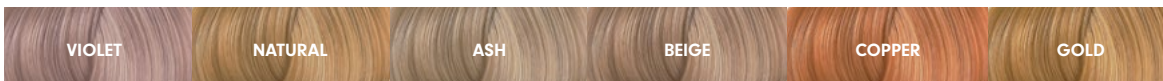
Always use PRAVANA CREME DEVELOPER to maintain consistency and optimal results.

PRAVANA Developers	Levels of Lift	Processing Times
Zero Lift	None	20 - 30 Minutes
10 Volume	Minimal Lift - Maximum Deposit	30 Minutes
20 Volume	Up to 1 Level of Lift Optimal for Gray/White Coverage	30 - 45 Minutes
30 Volume	Up to 2 Levels of Lift For Lighter, Brighter Effects	Up to 45 Minutes
40 Volume	Up to 3 Levels of Lift For Maximum Lifting	Up to 45 Minutes

3B LIFTING LEVELS OR DEPOSITING?

ULTRA HI-LIFTS

ChromaSilk Ultra Hi-Lifts are the perfect way to create multi-dimensional, natural blondes with the most lift available in one-step coloring, without the use of bleach. Formulated for use on virgin hair levels 6 and up.



ChromaSilk Ultra Hi-Lifts are oxidative colors that are formulated to be mixed with 30 or 40 volume Creme Developer for maximum lift or Zero Lift and 10 Volume for base-breaking. Use for both on and off the scalp applications, perfect for global blonding, base-lifting, highlighting and hair-painting.

Technique	Developer Volume Choice	Levels of Lift	Processing Times
Base-Breaking	Zero Lift	1 - 2	15 - 20 Minutes
	10 Volume	2 - 3	15 - 20 Minutes
Touch-Up, Global Blonding, Hair-Painting and Highlighting	30 Volume	3 - 4	45 Minutes
	40 Volume	4 - 5	45 Minutes

000 LIGHTENING BOOSTER

Use on virgin hair for the maximum amount of un-toned lift attainable without the use of bleach.

ChromaSilk Lightening Booster (000) shares the same protein-enriched base as the other ChromaSilk Creme Hair Colors but is void of color and has an elevated level of alkalinity to maximize its ability to lighten natural pigment.

4 PERCENTAGE OF GRAY HAIR

GRAY COVERAGE

When formulating for blended gray, we account for this in percentage increments of 25. For every 25% of gray, we will mix into our target shade formula that same % of either the ChromaSilk Natural or Gold series at the same level. To maintain a target shade's coolness when coloring gray, add one of the colors from the Natural series to the formula. If however, the target color is warm or has a higher percentage of gray, adding the Natural series could produce a cooler result. If replaced with the Gold series, a warmer target color could be created.

GRAY COVERAGE CHART

Percent of Gray Hair	Percent of Natural or Gold Shade	Percent of Target Shade
25%	25%	75%
50%	50%	50%
75% +	75%	25%

5 CONTRIBUTING FACTORS

NATURAL LEVEL	NATURAL UNDERLYING PIGMENT	CORRECTING COLOR
10		V SHADES
9		
8		
7		V, Bv SHADES
6		
5		Aa, A, N SHADES
4		
3		
2		
1		




UNDERLYING PIGMENT CHART

When the desired outcome is lighter than the natural level of the hair, then lifting is required. As hair is lightened, the underlying color of the hair becomes a factor in contributing a different color to the final result. We refer to this as the underlying pigment of the hair. As the hair gets lighter, it moves through various warm tones starting with red at the darkest levels, moving through orange, and eventually yellow at lighter levels. The Underlying Pigment Chart helps you determine the underlying pigments at each level and the correcting color needed to neutralize the unwanted pigment.







REPLENISHING/FILLING OPTIONS

Replenishing is a necessary step when replacing the underlying pigment foundation for hair color when creating darker colors. With ChromaSilk, there is no need to fill or replenish in multiple steps. Easily replenish by adding some key colors directly into your target shade formula. Anytime 2 or more levels are being tinted back, it is suggested to add the recommended warm tones to the formula: 8.34, 8.43 or 6.34.

Add ¼ oz. of the replenishing color into the formula for every ¾ oz. of the target shade. Mix the appropriate developer and you have an easy one-step tint-back formula.

Target Level	How Much to Add	Replenishing Level & Shade
7 or 8	¼ oz. to ¾ oz. Target Color	8.34 / 8Gc 
Overly - Porous	¼ oz. to ¾ oz. Target Color	8.43 / 8Cg 
6 or Lower	¼ oz. to ¾ oz. Target Color	6.34 / 6Gc 

If the target shade is between level 6-8 and happens to be in the target tones of Neutral, Gold or Copper, PRAVANA also offers its Lowlight Collection, a collection of 6 shades that are pre-blended with replenishing tones. The popular shades of Levels 6 and 8 Gold, Copper and Neutral create natural-looking lowlights to complement every skin tone and simplify the lowlight service with color deposit and replenishing in 1-step.

6.3L		6.4L		6NtL		8NtL		8.3L		8.4L	
6GL		6CL		6NtL		8NtL		8GL		8CL	

CHROMASILK ESSENTIALS

CHROMASILK IS SEGMENTED INTO WARM AND COOL COLOR FAMILIES AND UTILIZES THE INTERNATIONAL 10 LEVEL NUMBERING SYSTEM.

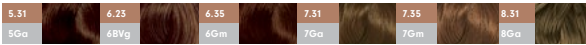
LOWLIGHT COLLECTION



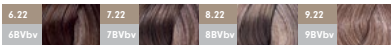
COOL FASHION BROWNS/BLONDES



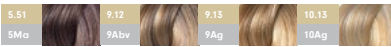
FASHION BROWNS



BEIGE



LIGHT FASHION ASH



INTENSE ASH



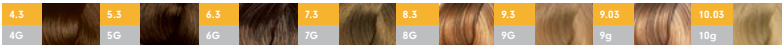
ASH



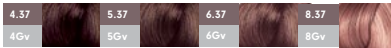
NATURALS



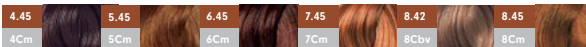
GOLDEN



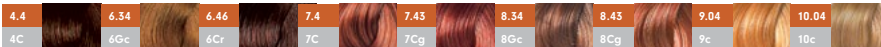
BOMBSHELL BRUNETTES



COOL COPPER



COPPER



VIBRANT COPPER



VIBRANT RED



ULTRA HI-LIFTS



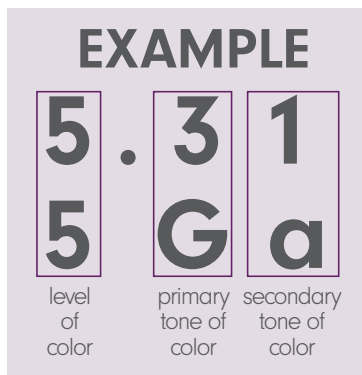
EXPRESS TONES



CORRECTORS + ADDITIVES



CREATING HAIR COLOR FORMULAS USING THE CHROMASILK LEVEL AND TONAL VALUE NUMBER SYSTEM



= Level of deposit

The first number before the decimal point expresses the level or depth of color.

#.# = 100% of tone EXAMPLE: .4 (C)

The number or numbers following the decimal point expresses the tonal value of the particular shade. When there is one number after the decimal point, that number represents 100% of the tone of that shade.

70% Primary/ 30% Secondary EXAMPLE: .37 (Gv)

If there are two numbers after the decimal point the first number represents the primary base tone, 70% of the color. The second number following the decimal point represents a secondary accent tone, which is 30% of the color.

##0 = Bright EXAMPLE: .40 (CC)

When the second number following the decimal is a 0, then the color is a Bright shade. The 0 indicates a secondary accent tone of the same tonal value but slightly lighter and brighter.

= Intense EXAMPLE: .44 (Cc)

When the first and second numbers following the decimal point are the same, this indicates a doubling of that tone, creating Intense shades.

#.0# = Sheer EXAMPLE: .02 (bv)

When the first number following the decimal point is a 0, then the color is a Sheer version of the tone represented by the number following the decimal point as there is no primary tone.

CHROMASILK VIVIDS

CHROMASILK VIVIDS COLLECTION LONG-LASTING SEMI-PERMANENT COLORS

- ChromaSilk VIVIDS Collection is formulated to be applied directly to clean, dry, lightened hair to create exciting and vibrant color options.
- ChromaSilk VIVIDS are available in 10 vibrant shades: Silver, Yellow, Orange, Red, Pink, Magenta, Violet, Green, Blue and Wild Orchid.
- ChromaSilk NEONS are available in 5 shades: NEON Pink, NEON Orange, NEON Yellow, NEON Green and NEON Blue.
- ChromaSilk PASTELS are available in 5 delicate shades: PASTELS Pretty in Pink, PASTELS Luscious Lavender, PASTELS Blissful Blue, PASTELS Too Cute Coral and PASTELS Mystical Mint.
- ChromaSilk VIVIDS Locked-In are available in 6 bright shades that do not bleed or transfer: Locked-In Red, Locked-In Yellow, Locked-In Blue, Locked-In Teal, Locked-In Purple, Locked-In Pink.
- VIVIDS Clear is available to pastel or lighten any shade for ultimate color customization. VIVIDS Black (additives) is available to customize, deepen and darken any VIVIDS color.
- VIVIDS are semi-permanent colors that are not mixed with developer.
- VIVIDS process for 20-30 minutes at room temperature.
- VIVIDS last 3-12 weeks depending on the texture, porosity, maintenance and overall condition of the hair. To create long-lasting, true-to-tone colors it is necessary to pre-lighten the hair according to the Lift-to Level Chart. Use PRAVANA Pure Light Power Lightener for best results.

MIXING RATIO

1 scoop (1 oz.) Pure Light Power Lightener: 3 oz of PRAVANA Creme Developer.

- Process until the recommended level is reached

Hair Color Desired	Pre-Lighten to
VIVIDS: Wild Orchid, Magenta, Red, Orange	Lift to level 7
LOCKED-IN: Pink and Red	Lift to level 8
VIVIDS: Yellow, Green NEONS: Orange, Yellow, Green LOCKED-IN: Yellow, Teal, Purple	Lift to level 9
VIVIDS: Blue, Silver, Pink NEONS: Blue, Pink Locked-In: Blue ALL PASTELS	Lift to level 10



PRAVANA LIGHTENERS

Pure Light Power Lightener is a blue/violet micro-encapsulated lightener with time-released lightening to ensure even and gentle processing for up to 55 minutes. Lift seven levels and beyond while maintaining the natural integrity of the hair fiber for foil work and global blonding.

Pure Light Balayage Lightener is a lightener that is specifically formulated to create effortless, natural blondes, through Balayage or foil-free lightening.

PURE LIGHT POWER LIGHTENER

- Micro-Encapsulated for Time-Released Lightening
- Dust-Free Formula
- No Puffing or Swelling
- Lifts 7+ Levels



PURE LIGHT BALAYAGE LIGHTENER

- Formulated for Balayage
- Proprietary Blend of Rice Flour + Kaolin Clay Creates Hardened Shell for Ideal Balayage Consistency and Foil-Free Lightening
- Thick, Whipped Consistency
- Lifts Up to 5 Levels for Gentle, Sun-kissed Lightening



WHEN TO USE

- On/Off Scalp Application
- Contained or Open-Air Lightening
- Global Blonding
- Maximum Lift - 7+ Levels
- Rapid Lightening

- Open-Air, Off-Scalp Lightening
- Gentle, Mid-Level Lift (up to 5 levels)
- Gradual Lightening
- Gradient/Blended Results

HOW TO USE

MIXING

- Zero Lift, 10, 20, 30 or 40 Volume Developer
- 1 part Pure Light : 3 parts Creme Developer

PROCESSING

- Even, controlled lifting for 55 minutes
- Formulated for room temperature processing only



MIXING

- For the most effective Balayage consistency, pair with one of the three Pure Light Balayage Activators: Low, Medium or High
- **Recommended** 1 : 2 (powder to developer)
- **Thicker** 1 : 1½ (dries faster and creates the lightest blend)
- **Thinner** 1 : 2½ (saturates hair for more obvious lightening)

PROCESSING

- Lifts for up to 55 minutes with full saturation
- Amount of lift is determined by both choice of Activator and amount of product applied (more product increases processing time)
- Can be used with low heat



TONING

Once lightened, a stylist can now move into choosing the correct toning option for the client. PRAVANA offers two ways to tone.

SILK DEGREES SHINE TREATMENT + CHROMASILK



Personalize a toner using the Silk Degrees Shine Treatment and your choice ChromaSilk shade.

1. Mix 1 part of the chosen ChromaSilk color shade(s) : 1 ½ part Zero Lift developer.
2. Add Silk Degrees Shine Treatment into the mixed color.

The amount of Silk Degrees Shine Treatment can be up to half of the working formula. Example: 1 ounce of color + 1½ ounce of Zero lift developer = 2½ ounces working product.

Up to an additional 1 ¼ ounces of Silk Degrees Shine Treatment could be added to create a custom toner.

CHROMASILK EXPRESS TONES



8 fast-acting, ammonia-free toners that deliver lustrous, long-lasting tone in under 5 minutes.

1. Mix ChromaSilk Express Tones with PRAVANA Zero Lift at a 1:1 ½ ratio.
2. Apply to damp hair with a tint brush.

Express Tones Clear is provided to mix with the other tones when less deposit is desired for levels 9 and 10. For level 9 deposit in 5 minutes, you will mix equal parts Clear with your desired Express Tone. For a level 10 deposit in 5 minutes, you will mix 2 parts Clear to 1 part desired Express Tone. If more time is needed, then you will need to add more Clear.

Consider these the ultimate topcoat for the hair, adding extreme shine that seals in iridescence and color.



SILK DEGREES SHINE TREATMENT

SILK DEGREES SHINE TREATMENT

Silk Degrees Shine Treatment is an essential salon service for stressed, damaged or dry hair, delivering deep-rooted condition and supernatural shine that lasts. PRAVANA's exclusive Cross-Link Nanotechnology™ works in synergy with thermal styling to bond keratin amino acids, wheat protein and hydrating botanicals with silk-infused silicone and silk amino acids that, in turn, bond with the hair deep inside the cortex.



THIS DEMI-PERMANENT SHINE TREATMENT IS ALSO GREAT PRIOR TO ANY VIVIDS APPLICATION:

Fills porosity after lightening

Creates anchoring sites for VIVIDs

Extends the life of VIVIDs

Ensures even application for VIVIDs



DIRECTIONS:

Shampoo with any NEVO Shampoo. Towel dry. Apply mixture of Demi-Permanent Shine Treatment and Shine Serum (in accordance with mixing table below) using a bowl and brush application. Comb through hair to ensure even coverage. Place a plastic cap over the hair and process under a warm hood dryer for 15-20 minutes. Rinse hair and towel dry.

Hair Length	How Much Treatment to Add	How Much Serum to Add
Short Hair	¾ oz. Silk Degrees Shine Treatment	Nickel-Sized Amount of Shine Serum
Medium Hair	1 oz. Silk Degrees Shine Treatment	Quarter-Sized Amount of Shine Serum
Long Hair	1½ oz. Silk Degrees Shine Treatment	Half Dollar-Sized Amount of Shine Serum

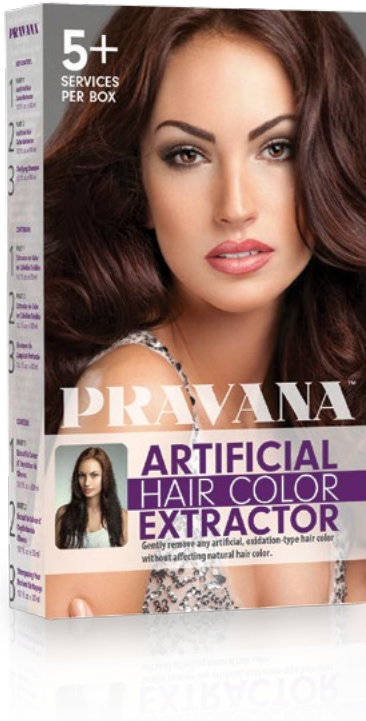
Typically, the shine and condition will last 8-12 shampoos. However, this can be greatly extended with regular use of Silk Degrees Shine Serum in a styling or post conditioner application.

ARTIFICIAL HAIR COLOR EXTRACTOR

Gently remove any artificial, oxidation-type hair color without affecting the natural hair color with PRAVANA's Artificial Hair Color Extractor.

Feature	Benefit
Contains no bleach, ammonia or formaldehyde	Removes artificial color with no harsh chemicals and without lifting the natural base color of the hair
Maintains the integrity of the hair fiber	Remove artificial color and color back all in the same day

DIRECTIONS FOR ARTIFICIAL HAIR COLOR EXTRACTOR:



1. Shampoo with NEVO Detox Clarifying Shampoo (provided in the kit).
2. Towel dry.
3. Mix equal parts 1 and 2 in a plastic or glass bowl.
4. Apply to hair that you wish to remove color from.
5. Place a processing cap on the hair.
6. Place client under pre-warmed heat source.
7. Process for 20 mins. (This is the maximum processing time).
8. Go directly from heat source to shampoo area.
9. Rinse with very warm water (as warm as the client can tolerate).
10. Shampoo with NEVO DETOX Clarifying Shampoo; manipulating the hair for 3-5 minutes.
11. Repeat the shampooing process.
12. To verify the dyes have been successfully extracted, rinse the hair with a 10 Volume developer and allow it to remain in hair for 20 seconds. Rinse with water. If there are dyes still present in the hair, they will oxidize and become visible.
13. Repeat AHCE service if desired results are not achieved or if the color is not completely extracted. The service can be performed up to 3 times.
14. After final shampoo and rinse, apply the appropriate NEVO conditioner.

COLORING AFTER ARTIFICIAL HAIR COLOR EXTRACTOR

Once you have completed the Artificial Hair Color Extractor Service, we recommend re-analyzing the hair. Performing a Silk Degrees Demi-Permanent Shine Treatment after an Artificial Hair Color Extractor is a great way to prepare the hair for the next color service. In cases of extreme porosity, it may be advisable to formulate up to two levels lighter than the target shade.



BEFORE AHCE



AFTER AHCE



COLOR AFTER AHCE



BEFORE AHCE



AFTER AHCE



COLOR
AFTER AHCE



ChromaSilk™

COLLECTION

COLOR CONVERSION CHARTS

GOLDWELL TOPCHIC TO CHROMASILK COLOR CONVERSION SHEET

Goldwell Topchic	ChromaSilk	Notes
Natural Tones	Natural Tones – 100% gray coverage	Slight Blue Base - Goldwell's Naturals may appear warmer
2N	1pt 1N : 1 pt 3N	Black & Dark Brown
3N	3N	Dark Brown
4N	4N	Brown
5N	5N	Light Brown
6N	6N	Dark Blonde
7N	7N	Blonde
8N	8N	Light Blonde
9N	9N	Very Light Blonde
10N	10N	Extra Light Blonde
Ash Tones	Natural Tones – 100% gray coverage	Slight Blue Base - to add more blue tone add 1 inch of Ash Blue Corrector/1 oz. of color for starting levels 3-5
2A	1pt 1N : 1 pt 3N	Black & Dark Brown
5A	5N	Light Brown
6A	6N	Dark Blonde
7A	7N	Blonde
8A	8N	Light Blonde
9A	9N	Very Light Blonde
10A	10N	Extra Light Blonde
Natural Ash Tones	Natural & Beige Tones	Slight Blue Base & Double Blue Violet Base
6NA	1pt 6N : 1pt 6.22	Dark Blonde & Intense Dark Beige Blonde
7NA	1pt 7N : 1pt 7.22	Blonde & Intense Beige Blonde
8NA	1pt 8N : 1pt 8.22	Light Blonde & Light Intense Beige Blonde
9NA	1pt 9N : 1pt 9.22	Very Light Blonde & Very Light Intense Beige Blonde

Pearl Tones	Beige Tones	Blue Violet Base
PA	No comparison	
6PA	6.22	Intense Dark Beige Blonde - may appear cooler
P	No comparison	
8P	8.22	Light Intense Beige Blonde - may appear cooler
9P	9.22	Very Light Intense Beige Blonde - may appear cooler
10P	10.02	Ultra Sheer Beige Blonde
Pearl/Violet Tones	Beige & Cool Fashion Tones	Blue & Violet Bases
9PV	9.22	Very Light Intense Beige Blonde - may appear more blue
10V	10.07	Ultra Sheer Platinum Blonde
Gold Tones & Gold Beige Tones	Golden & Beige Tones	Gold, Blue & Violet Bases - colors may appear 1/2 shade lighter
4G	4.3	Golden Brown
6G	6.3	Dark Golden Blonde
7G	7.3	Golden Blonde
8G	8.3	Light Golden Blonde
9G	9.3	Very Light Golden Blonde
9GN	1pt 9.3 : 1pt 9	Very Light Golden Blonde & Very Light Blonde
7GB	1pt 7.3 : 1pt 7.22	Golden Blonde & Intense Beige Blonde
8GB	1pt 8.3 : 1pt 8.22	Light Golden Blonde & Light Intense Beige Blonde
9GB	1pt 9.3 : 1pt 9.22	Very Light Golden Blonde & Very Light Intense Beige Blonde
10GB	1pt 10.03 : 1pt 10.02	Ultra Sheer Golden Extra Light Blonde & Ultra Sheer Beige Blonde

Brown Tones	Natural, Cool Copper & Golden Tones	Slight Blue, Gold & Orange Bases
4B	1pt 3N : 1pt 4.45	Dark Brown & Copper Mahogany Brown
5B	1pt 5N : 1pt 4.45	Light Brown & Copper Mahogany brown
6B	1pt 6N : 1pt 4.45	Dark Blonde & Dark Copper Mahogany Blonde - may appear darker
7B	1pt 7N : 1pt 6.45	Blonde & Dark Copper Mahogany Blonde - may appear darker
7BN	7.35	Golden Mahogany Blonde
8B	2pts 8.22 : 1pt 9.03	Light Golden Beige Blonde & Very Light Intense Golden Blonde
10B	10.02	Ultra Sheer Beige Blonde
Copper Naturals and Copper Gold Tones	Cool Copper & Copper Tones	Gold & Orange Bases
5NK	4.4	Copper Brown
6KB	5.45	Light Copper Mahogany Brown
7KG	1pt 7.43 : 1pt 7.46	Copper Golden Blonde & Copper Red Blonde - or 7.44 for more intense copper
8KG	7.43	Copper Golden Blonde - may appear darker
Copper Red Tones	Copper & Vibrant Red Tones	Orange & Red Tones
6KR	2pts 6.46 : 1pt 6.66	Dark Copper Red Blonde & Dark Intense Red Blonde
7KR	7.46	Copper Red Blonde
7RG	1pt 7.46 : 1pt 7.43	Copper Red Blonde & Copper Golden Blonde
8KR	1pt 9.04 : 1pt 7.66	Very Light Sheer Copper Blonde & Intense Red Blonde

Red Brown Tones	Natural & Bronze Tones	Cool Blue & Golden Orange Bases
5RB	1pt 5N : 1pt 5.6	Light Brown & Light Red Brown
6RB	1pt 6N : 1pt 5.6	Dark Blonde & Light Red Brown
7RB	2pts 7N : 1pt 5.6	Blonde & Light Red Brown - may appear darker
8RB	2pts 8N : 1pt 7.66	Light Blonde & Intense Red Blonde - may appear darker
Red Tones	Vibrant Red Tones	Red Base
4R	1pt 4N : 1pt 5.6	Brown & Light Red Brown
5R	5.6	Light Red Brown
6R	6.66	Dark Intense Red Blonde - may appear brighter red
8RR	NA	NA
Violet Tones	Cool Fashion & Vibrant Red Tones	Violet & Red Bases
4V	4.20	Bright Beige Brown - close match
5V	5.7	Light Violet Brown
5VR	1pt 5.7 : 1pt 5.6	Light Violet Brown & Light Red Brown
6V	1pt 7N : 1pt 5.7	Blonde & Light Violet Brown
6VR	1pt 5.7 : 1pt 6.66	Light Violet Brown & Dark Intense Red Blonde - may appear brighter
High Lift Tones	Super Light Blondes	Super Light Blondes including 000 mix with double 30 or 40 volume developer.
11V Special Violet Blonde	10.07	Ultra Sheer Platinum Blonde - Close match, but may appear darker
11A Special Ash Blonde	3 pts 901 : 1 pt 000	Ultra Light Ash Blonde – ¾ 000 & ¼ color gives up to 1 ½ additional levels of lift.
11P Special Blonde Pearl	3 pts 902 : 1 pt 000	Ultra Light Platinum Blonde – ¾ 000 & ¼ color gives up to 1 ½ additional levels of lift.
11N Special Natural Blonde	3 pts 900 : 1pt 000	Ultra Light Blonde – ¾ 000 & ¼ color gives up to 1 ½ additional levels of lift
11B Special Beige Blonde	NA	NA
11GB Special Sahara Beige Blonde	NA	NA
11G Special Gold Blonde	3 pts 903 : 1 pt 000	Ultra Light Golden Blonde – ¾ 000 ¼ color gives up to 1 ½ additional levels of lift
Blonding Cream	000	Lightening Booster

MATRIX COLOR INSIDER TO CHROMASILK COLOR CONVERSION SHEET

Matrix Color Insider	ChromaSilk	Notes
Natural	Natural Tones - 100% gray coverage	Slight Blue Base
1N	1N	Black
2N	1pt 1N : 1pt 3N	Black & Dark Brown
3N	3N	Dark Brown
4N	4N	Brown
5N	5N	Light Brown
6N	6N	Dark Blonde
7N	7N	Blonde
8N	8N	Light Blonde
9N	9N	Very Light Blonde
10N	10N	Extra Light Blonde
Mahogany Tones	Cool Fashion Tones	Violet & Red Bases
4M	4.20	Bright Beige Brown
5M	5.5	Light Mahogany Brown
6M	6.5	Dark Mahogany Blonde
8M	NA	NA
10M	NA	NA
Violet Tones	Cool Fashion Tones	Slight Blue, Violet & Mahogany Bases
3V	1pt 3 : 1pt 4.20	Dark Brown & Bright Beige Brown - close match
5V	5.7	Light Violet Brown
7V	7.52	Mahogany Violet Blonde - may appear more red
9V	NA	NA
10V	10.07	Ultra Sheer Platinum Blonde

Ash	Ash Tones	Cool Green Base
5A	5 w/ Ash Corrector	Light Brown & 1 inch Ash Corrector/ 1 oz. color
6A	6.1	Dark Ash Blonde
8A	8.1	Light Ash Blonde
10A	10.1	Extra Light Ash Blonde
Ash	Intense Ash Tones	Cool Green Double Ash Base
2AA	NA	NA
4AA	NA	NA
6AA	6.11	Dark Intense Ash Blonde
Neutral Warm Tones	Golden & Natural Tones - 100% gray coverage	Slight Blue & Gold Bases
3NW	NA	NA
4NW	1pt 4N : 1pt 4.3	Brown & Golden Brown
5NW	1pt 5N : 1pt 5.3	Light Brown & Light Golden Brown
6NW	1pt 6N : 1pt 6.3	Dark Blonde & Dark Golden Blonde
7NW	1pt 7N : 1pt 7.3	Blonde & Golden Blonde
8NW	1pt 8N : 1pt 8.3	Light Blonde & Light Golden Blonde
9NW	1pt 9N : 1pt 9.3	Very Light Blonde & Very Light Golden Blonde
Warm Tones	Golden Tones	Gold & Mahogany Bases
4WM	1pt 4.3 : 1pt 5.5	Golden Brown & Light Mahogany Brown - may appear lighter
5WM	1pt 5.3 : 1pt 5.5	Light Golden Brown & Light Mahogany Brown
7WM	1pt 7.3 : 1pt 7.5	Golden Blonde & Mahogany Blonde

Brown/Blonde Copper	Beige and Copper Tones	Slight Blue & Orange Bases
5BC	1pt 5N : 1pt 4.4	Light Brown & Copper Brown - close match
7BC	1pt 7N : 1pt 7.4	Blonde & Copper Blonde - close match
Brown Red	Natural & Vibrant Red Tones	Slight Blue & Red Base
4BR	1pt 4N : 1pt 5.6	Brown & Light Red Brown - close match
6BR	2pts 6N : 1pt 5.6	Dark Blonde & Light Red Brown - close match
Gold Violet	Bombshell	Gold Violet Base
6GV	6.37	Golden Violet Dark Blonde
8GV	8.37	Golden Violet Light Blonde
10GV	1 pt 10.03 : 1 pt 10.07	Sheer Golden Violet Blonde
Gold	Golden Tones - 100% gray coverage	Gold Base
3G	NA	
5G	5.3	Light Golden Brown
7G	7.3	Golden Blonde
9G	9.3	Very Light Golden Blonde
Gold Copper	Copper Tones	Gold & Orange Bases
7GC	1pt 6.34 : 1pt 8.34	Golden Copper Blonde & Light Golden Copper Blonde - close match
9GC	NA	NA

Copper	Copper	Orange Base
7C	7.4	Copper Blonde
8C	8.43	Light Copper Golden Blonde - may appear more gold
Red Copper	Natural & Vibrant Red Tones	Slight Blue, Red & Orange Bases
5RC	1pt 5 : 2pts 6.64	Light Brown & Dark Red Copper Brown - close match
7RC	7.64	Red Copper Blonde
Red	Vibrant Red Tones	Red Base
5R	5.6	Light Red Brown
6R	NA	NA
Red Red	Vibrant Red Tones	Red Base
5RR+	5.66	Light Intense Red Brown
6RR+	6.66	Dark Intense Red Blonde
Red Violet	Vibrant Red & Cool Fashion Tones	Red & Violet Bases
4RV	4.56	Mahogany Red Brown - close match
5RV	1pt 5.6 : 1pt 5.7	Light Red Brown & Light Violet Brown

MATRIX SOCOLOR TO CHROMASILK COLOR CONVERSION SHEET

Matrix SoColor	ChromaSilk	Notes
Grey/T Naturals - 50% gray coverage - neutral	Natural Tones – 100% gray coverage	Slight Blue Base
504	4N	Brown
505	5N	Light Brown
506	6N	Dark Blonde
507	7N	Blonde
508	8N	Light Blonde
509	9N	Very Light Blonde
510	10N	Extra Light Blonde
Grey/T Naturals - 50% gray coverage - warm	Golden Tones - 100% gray coverage	Gold Base
504-W	4.3	Golden Brown
506-W	6.3	Dark Golden Blonde - close match
508-W	9.3	Very Light Golden Blonde - close match
Grey/T Naturals - 50% gray coverage - red	Natural & Vibrant Red Tones	Slight Blue & Red Bases
503-R	2pts 3N : 1pt 5.6	Dark Brown & Light Red Brown - close match
505-R	1pt 5N : 1pt 5.6	Light Brown & Light Red Brown
507-R	3pts 7N : 1pt 5.6	Blonde & Light Red Brown - close match
509-R	NA	NA
Ultra Lights	Super Light Blondes	ChromaSilk Super Light Blondes including 000 should be mixed with 1:2 with 30 or 40 volume developer
UL-A	1pt 901 : 1pt 000	Ultra Light Ash Blonde + 000 gives up to 1 additional level of lift
UL-PA	1pt 901 : 1pt 902 : 2pt 000	Ultra Light Ash Blonde & Ultra Light Platinum Blonde + 000 gives up to 1 additional level of lift
UL-I	NA	NA
UL-N	1pt 900 : 1pt 000	Ultra Light Blonde + 000 gives up to 1 additional level of lift
UL-PN	1pt 902 : 1pt 000	Ultra Light Platinum Blonde + 000 gives up to 1 additional level of lift

Blended Collection	Natural Tones – 100% gray coverage	Slight Blue Base
1	1N	Black
2	1pt 1N: 1pt 3N	Black & Dark Brown
3	3N	Dark Brown
4	4N	Brown
5	5N	Light Brown
6	6N	Dark Blonde
7	7N	Blonde
8	8N	Light Blonde
9	9N	Very Light Blonde
10	10N	Extra Light Blonde
11	NA	NA
Ash	Ash Tones	Cool Green Base
4A	4N w/ Ash Green Corrector	Brown & 1inch Ash Green Corrector / 1 oz. color.
5A	5N w/Ash Green Corrector	Light Brown & 1 inch Ash Green Corrector / 1 oz. color
6A	6.1	Dark Ash Blonde
7A	7.1	Medium Ash Blonde
8A	8.1	Light Ash Blonde
9A	9.1	Very Light Ash Blonde
11A	NA	NA
Double Ash	Intense Ash Tones	Cool Double Green Base
6AA	7.11	Intense Ash Blonde
7AA	8.11	Light Intense Ash Blonde
8AA	9.11	Very Light Intense Ash Blonde
Iridescent	Beige Tones	Cool Blue Violet Base
7-I	8.22	Light Intense Beige Blonde
9-I	9.22	Very Light Intense Beige Blonde
11-I	NA	NA

Beige	Intense Ash Tones	Cool Blended Green Base
8B	9.12	Very Light Ash Beige Blonde
10B	10.13	Extra Light Ash Golden Blonde - close match
Mocha	Natural & Fashion Tones	Slight Blue, Gold & Copper Bases
4M	1pt 4.3 : 1pt 4.4	Golden Brown & Copper Brown
5M	1pt 5N : 1pt 6.35	Light Brown & Dark Golden Mahogany Blonde - close match
6M	1pt 6N : 1pt 6.34	Dark Blonde & Dark Golden Copper Blonde
7M	7.35	Golden Mahogany Blonde
8M	8.31	Light Golden Ash Blonde - close match
Warm	Golden & Fashion Tones	Gold & Mahogany Bases
5W	1pt 5.3 : 1pt 6.35	Light Golden Brown & Golden Mahogany Brown
6W	6.35	Dark Golden Mahogany Blonde
7W	7.35	Golden Mahogany Blonde
8W	1pt 8N : 1pt 7.35	Light Blonde & Light Golden Mahogany Blonde
11W	NA	NA
Gold	Golden Tones - 100% gray coverage	Gold Base
5G	5.3	Light Golden Brown - close match
7G	7.3	Golden Blonde
9G	9.3	Very Light Golden Blonde
Copper Gold	Copper Tones	Gold & Orange Bases
5CG	5.45	Light Copper Mahogany - close match
7CG	1pt 6.34 : 1pt 8.43	Copper Golden Blonde & Light Copper Golden Blonde
9CG	9.04	Very Light Intense Copper Blonde

Red/Brown/Blonde	Natural Copper & Vibrant Red Tones	Slight Blue, Orange & Red Bases
4RB	1pt 4N : 1pt 5.6	Brown & Light Red Brown
6RB	1pt 6N : 2pts 5.6	Dark Blonde & Light Red Brown
7RB	2pts 7.4 : 1pt 5.6	Copper Blonde & Light Red Brown
8RB	NA	NA
Red	Natural & Vibrant Red Tones	Slight Blue & Red Bases
6R	1pt 6N : 1pt 6.66	Dark Blonde & Dark Intense Red Blonde - may appear brighter
7R	NA	NA
Coppers	Copper Tones	Orange Base
7CC	7.44	Intense Copper Blonde
8CC	8.43	Light Copper Golden Blonde - may appear more gold
9CC	9.04	Very Light Sheer Copper Blonde - close match
Red/Coppers	Vibrant Red & Copper Tones	Red & Orange Bases
5RC	2pts 5.6 : 1pt 4.4	Light Red Brown & Copper Brown
6RC	6.64	Dark Red Copper Blonde
8RC	7.64	Red Copper Blonde, - may appear darker
Red Red	Vibrant Red Tones	Red Base
4RR	NA	NA
5RR	5.66	Light Intense Red Brown
6RR	6.66	Dark Intense Red Blonde
7RR	7.66	Intense Red Blonde
Red Violet	Cool Fashion & Vibrant Red Tones	Mahogany, Violet & Red Bases
4RV	4.56	Mahogany Red Brown, close match
5RV	1pt 5.6 : 1pt 5.7	Light Red Brown & Light Violet Brown
6RV	7.62	Light Red/Violet Blond
Mocha	Cool Fashion & Vibrant Red Tones	Violet & Red Bases
3VR	NA	NA
5VR	2pts 5.7 : 1pt 5.6	Light Violet Brown & Light Red Brown

MATRIX COLOR SYNC TO CHROMASILK COLOR CONVERSION SHEET

Matrix Color Sync	ChromaSilk	Notes
Neutrals	Natural Tones - 100% gray coverage	Slight Blue Base
3N	3N	Dark Brown
5N	5N	Light Brown
6N	6N	Dark Blonde
8N	8N	Light Blonde
10N	10N	Extra Light Blonde
Ashes	Ash & Natural Tones	Cool Green & Slight Blue Bases
1A	1N	Black
4A	4N w/ Ash Corrector	Brown
6A	6.1	Dark Ash Blonde
8A	8.1	Light Ash Blonde
10A	10.1	Extra Light Ash Blonde
Golds	Golden Tones - .3 for 100% gray coverage	Gold Base
4G	4.3	Golden Brown
6G	6.3	Dark Golden Blonde
8G	8.3	Light Golden Blonde
10G	10.03	Ultra Sheer Golden Extra Light Blonde - may appear more translucent
Copper Golds	Copper & Golden Tones	Orange & Gold Bases
6CG	7.43	Copper Golden Blonde - may appear warmer
8CG	8.43	Light Copper Golden Blonde
10CG	1pt 10.04 : 1pt 10.03	Ultra Sheer Copper Blonde & Ultra Sheer Extra Light Golden Blonde - close match

Red Browns	Natural & Cool Fashion Tones	Slight Blue & Mahogany Bases
4RB	1pt 4N : 1pt 5.5	Brown & Light Mahogany Brown - close match
6RB	6.5	Dark Mahogany Blonde - close match
8RB	7.5	Mahogany Blonde - may appear darker
Red Coppers	Copper & Vibrant Red Tones	Orange & Red Bases
6RC	6.64	Dark Red Copper Blonde
7RC	7.64	Red Copper Blonde
8RC	1pt 8N : 2pts 7.64	Light Blonde & Red Copper Blonde - close match
Red Violets	Cool Fashion & Vibrant Red Tones	Mahogany, Red & Violet Bases
4RV	4.52	Mahogany Violet Brown - close match
5RV	5.62	Light Red Violet Brown
6RV	1pt 5.62 : 1pt 7.62	Light Red Violet Brown & Red Violet Blonde

REDKEN SHADES TO CHROMASILK COLOR CONVERSION SHEET

Mix with Zero Lift Developer to create a Demi-Permanent color. 1 pt. Color + 1 ½ pts. developer

Redken Shades	ChromaSilk	Notes
Natural Tones	Natural Tones	Slight Blue Base
02N	½ oz. 1N & 1oz. 3N	Black & Dark Brown
03N	3N	Dark Brown
05N	5N	Light Brown
06N	6N	Dark Blonde
08N	8N	Light Blonde
09N	9N	Very Light Blonde
Gold	Golden Tones	Gold Base
03G	2pts 3N : 1pt 4.3	Dark Brown & Golden Brown - close match
05G	5.3	Light Golden Brown
06G	6.3	Dark Golden Blonde
07G	7.3	Golden Blonde
09G	9.3	Very Light Golden Blonde
Natural Brown Blondes	Natural Tones & Fashion Brown	Slight Blue & Cool Gold Bases
03NB	3N w/ Yellow Additive	Dark Brown & 1 inch Yellow Additive / 1 oz. color
04NB	4N w/ Yellow Additive	Brown & 1 inch Yellow Additive / 1 oz. color
06NB	6.35	Dark Golden Mahogany Blonde - may be too bright on gray hair
07NB	7.35	Golden Mahogany Blonde
Warm Gold	Cool Copper	Orange & Mahogany Bases
04WG	5.45	Light Copper Mahogany Brown - close match
06WG	6.45	Dark Copper Mahogany Blonde - close match
08WG	8.45	Light Copper Mahogany Blonde - close match
Gold Beige	Fashion Brown, Golden & Beige Tones	Gold & Blue Violet Bases
06GB	6.23	Dark Beige Golden Blonde
08GB	1pt 9.3 : 1pt 8.22	Very Light Golden Blonde & Light Intense Beige Blonde
09GB	1pt 9.3 : 1pt 9.22	Very Light Golden Blonde & Very Light Intense Beige Blonde

Copper	Vibrant Copper & Copper Tones	Orange, Red & Gold Bases
06C	6.46	Dark Copper Red Blonde - more red
07C	7.4	Copper Blonde
08C	8.43	Light Copper Golden Blonde - has more gold
09AA	9.04	Very Light Sheer Copper Blonde
Auburns	Vibrant Copper & Copper Tones	Orange Base
03A	NA	NA
06AA	6.46	Dark Copper Red Blonde - close match
09AA	9.04	Very Light Sheer Copper Blonde
Red Brown	Natural, Cool Fashion & Vibrant Red Tones	Slight Blue, Violet Red & Red Bases
03RB	2pts 3 : 1pt 4.56	Dark Brown & Mahogany Red Brown
06RB	2pts 6 : 1pt 6.66	Dark Blonde & Dark Intense Red Blonde - more intense
09RB	NA	NA
Red	Vibrant Red Tones	Red Base
03R	NA	NA
06R	6.66	Dark Intense Red Blonde - more intense
Red Violet	Cool Fashion & Vibrant Red Tones	Violet & Red Bases
03RV	4.56	Mahogany Red Brown - close match slightly lighter
06RV	1pt 6.66 : 1pt 5.7	Dark Intense Red Blonde & Light Violet Brown - close match
Green Natural	Ash Tones	Cool Green Base
06GN	6.1	Dark Ash Blonde
08GN	8.1	Light Ash Blonde
Blue	Natural & Beige Tones	Slight Blue & Blue Violet Bases
01B	1N w/ Ash Blue Corrector	Black & 1 inch Ash Blue Corrector / 1 oz. color
09B	9.22	Very Light Intense Beige Blonde
Violet	Cool Fashion & Fashion Tones	Blue Violet, Gold & Violet Bases
03V	No comparison	
06GB	6.23	Dark Beige Golden Blonde, - close match more beige less gold
09V	10.07	Ultra Sheer Platinum Blonde - close match

REDKEN COLOR FUSION TO CHROMASILK COLOR CONVERSION SHEET

Redken Color Fusion	ChromaSilk	Notes
Natural Tones	Natural Tones – 100% gray coverage	Slight Blue Base
2N	½ oz. 1N : 1 oz. 3N	Black & Dark Brown
3N	3N	Dark Brown
4N	4N	Brown
5N	5N	Light Brown
6N	6N	Dark Blonde
7N	7N	Blonde
8N	8N	Light Blonde
9N	9N	Very Light Blonde
10N	10N	Extra Light Blonde
12N	NA	NA
Natural/ Natural Tones	Natural Tones – 100% gray coverage	Slight Blue Base
4NN	4N	Brown
5NN	5N	Light Brown
6NN	6N	Dark Blonde
7NN	7N	Blonde
8NN	8N	Light Blonde
Ash/blue Tones	Natural Tones	Slight Blue Base & Ash Blue Corrector for starting levels 3-5
1Ab	1N w/ Ash Blue Corrector	Black & 1 inch Ash Blue Corrector / 1 oz. color
4Ab	4N w/ Ash Blue Corrector	Brown & 1 inch Ash Blue Corrector / 1 oz. color
6Ab	6N w/ Ash Blue Corrector	Dark Blonde & 1 inch Ash Blue Corrector / 1 oz. color
8Ab	8N w/ Ash Blue Corrector	Light Blonde & 1 inch Ash Blue Corrector / 1 oz. color
10A	NA	NA
12Ab	NA	NA

Ash/green Tones	Ash Tones	Cool Green Base
4Ag	4N w/ Ash Green Corrector	Brown & 1 inch Ash Green Corrector / 1 oz. color
6Ag	6.1	Dark Ash Blonde
8Ag	8.1	Light Ash Blonde
Ash Violet	Natural & Cool Fashion Tones	Blue & Violet Bases
7Av	7N w/ Ash Corrector	Blonde & 1 inch Ash Corrector / 1 oz. color
9Av	10.07	Ultra Sheer Platinum Blonde - close match
Gold/beige Tones	Golden & Beige Tones	Gold, Blue & Violet Bases
3Gb	NA	NA
4Gb	4.3	Golden Brown
5Gb	1pt 5.3 : 1pt 6.22	Light Golden Brown & Intense Dark Beige Blonde
6Gb	1pt 6.3 : 1pt 6.22	Dark Golden Blonde & Intense Dark Beige Blonde
7Gb	1pt 7.3 : 1pt 7.22	Golden Blonde & Intense Beige Blonde
8Gb	1pt 8.3 : 1pt 8.22	Light Golden Blonde & Light Intense Beige Blonde
9Gb	1pt 9.3 : 1pt 9.22	Light Golden Blonde & Very Light Intense Beige Blonde
10Gb	10.13	Extra Light Ash Golden Blonde - close match
Gold/violet	Bombshell, Golden & Cool Fashion Tones	Gold & Violet Bases
6Gv	6.37	Golden Violet Dark Blonde
8Gv	8.37	Golden Violet Light Blonde
10Gv	1pt 10.03 : 1pt 10.07	Ultra Sheer Golden Extra Light Blonde

Gold/gold Tones	Golden Tones & Yellow Additive	Gold Base & Yellow Additive
5Gg	5.3 w/ Yellow Additive	Light Golden Brown & 1 inch Yellow Additive / 1 oz. color
6Gg	6.3 w/ Yellow Additive	Dark Golden Blonde & 1 inch Yellow Additive / 1 oz. color
Gold/orange Tones	Copper Tones	Gold & Orange Base
5Go	6.34	Dark Golden Copper Blonde - may appear lighter
7Go	1pt 6.34 : 1pt 8.34	Dark Golden Copper Blonde & Light Golden Copper Blonde
12Go	NA	NA
Gold/red Tones	Golden & Vibrant Red Tones	Gold & Red Bases
2Gr	NA	NA
4Gr	4.3 w/ Red Additive	Golden Brown & 1 inch Red Additive / 1 oz. color
5Gr	2pts 5.3 : 1pt 5.6	Light Golden Brown & Light Red Brown
8Gr	8.3 w/ Red Additive	Light Golden Blonde & 1 inch Red Additive / 1 oz. color
9Gr	9.3 w/ Red Additive	Very Light Golden Blonde & 1 inch Red Additive / 1 oz. color
Brown/copper Tones	Natural & Copper Tones	Slight Blue & Orange Bases
4Bc	1pt 4N : 1pt 4.4	Brown & Copper Brown
5Bc	2pts 5N : 1pt 4.4	Light Brown & Copper Brown
6Bc	6.45	Dark Copper Mahogany Blonde
Brown/red Tones	Natural & Vibrant Red Tones	Slight Blue & Red Bases
3Br	NA	NA
4Br	2pts 4N : 1pt 5.6	Brown & Light Red Brown
5Br	1pt 5N : 1pt 5.6	Light Brown & Light Red Brown
6Br	2pts 6N : 1pt 5.6	Dark Blonde & Light Red Brown

Copper/red Tones	Copper Tones	Orange & Red Bases
5Cr	1pt 4.4 : 1pt 6.46	Copper Brown & Dark Copper Red Blonde
7Cr	7.46	Copper Red Blonde
Orange/red Tones	Copper & Vibrant Copper Tones	Orange & Red Bases
6Or	6.46	Dark Copper Red Blonde
8Or	8.43 w/ Red Additive	Light Copper Golden Blonde & 1 inch Red Additive / 1 oz. color
Red/copper Tones	Copper & Vibrant Copper Tones	Orange & Red Bases
4Rc	1pt 4.4 : 2pts 5.6	Copper Brown & Light Red Brown - close match
5Rc	2pts 5.6 : 1pt 7.4	Light Red Brown & Copper Blonde
7Rc	1pt 7.66 : 1pt 7.4	Intense Red Blonde & Copper Blonde
Red Tones	Vibrant Red Tones	Red Base
4R	1pt 4N : 1pt 5.6	Brown & Light Red Brown - close match
5R	5.6	Light Red Brown
6R	6.64	Dark Red Copper Blonde
7R	7.64	Red Copper Blonde
Red/red Tones	Vibrant Red Tones	Intense Red Base
4Rr	NA	NA
5Rr	5.66	Light Intense Red Brown
6Rr	6.66	Dark Intense Red Blonde
7Rr	7.66	Intense Red Blonde
Red/violet Tones	Vibrant Red Tones	Red Base
3Rv	NA	NA
5Rv	5.62	Light Red/Violet Brown
6Rv	1pt 5.62 : 1pt 7.62	Light Red Violet Brown & Light Red Violet Blonde
Violet/red Tones	Cool Fashion & Vibrant Red Tones	Violet & Red Bases
3Vr	NA	NA
5Vr	2pts 5.7 : 1pt 5.6	Light Violet Brown & Light Red Brown

PAUL MITCHELL THE COLOR TO CHROMASILK COLOR CONVERSION SHEET

Paul Mitchell the Color		ChromaSilk	Notes
The Naturals	Natural Tones – 100% gray coverage	Slight Blue Base	
1N	1N	Black	
2N	1pt 1N : 1pt 3N	Black & Dark Brown	
3N	3N	Dark Brown	
4N	4N	Brown	
5N	5N	Light Brown	
6N	6N	Dark Blonde	
7N	7N	Blonde	
8N	8N	Light Blonde	
10N	10N	Extra Light Blonde	
HLN	900	Ultra Light Blonde, mixes 1:2 30 or 40 volume developer	
UTN	NA	NA	
The Neutral Beiges	Natural & Beige Tones	Slight Blue & Blue Violet Base	
5NB	2pts 5N : 1pt 6.22	Light Brown & Intense Dark Beige Blonde - close match	
6NB	1pt 6N : 1pt 6.22	Dark Blonde & Intense Dark Beige Blonde	
7NB	1pt 7N : 1pt 7.22	Blonde & Intense Beige Blonde	
8NB	1pt 8N : 1pt 8.22	Light Blonde & Light Intense Beige Blonde	
10NB	1pt 10N : 1pt 10.02	Extra Light Blonde & Ultra Sheer Beige Blonde -close match	

The Ashes	Natural Tones	Slight Blue Base & Ash Blue Corrector for Starting Levels 3-5
3A	3N w/ Ash Blue Corrector	Dark Brown & 1 inch Ash Blue Corrector / 1 oz. color
4A	4N w/ Ash Blue Corrector	Brown & 1 inch Ash Blue Corrector / 1 oz. color
5A	5N w/ Ash Blue Corrector	Light Brown & 1 inch Ash Blue Corrector / 1 oz. color
6A	6N w/ Ash Blue Corrector	Dark Blonde & 1 inch Ash Blue Corrector / 1 oz. color
7A	7N w/ Ash Blue Corrector	Blonde & 1 inch Ash Blue Corrector / 1 oz. color
8A	8N w/ Ash Blue Corrector	Light Blonde & 1 inch Ash Blue Corrector / 1 oz. color
10A	NA	NA
The Cools	Beige Tones	Blue Violet Base
5CB	6.22	Intense Dark Beige Blonde
6CB	1pt 6.22 : 1pt 7.22	Intense Dark Beige Blonde & Intense Beige Blonde
7CB	1pt 7.22 : 1pt 8.22	Intense Beige Blonde & Light Intense Beige Blonde
8CB	1pt 8.22 : 1pt 9.22	Light Intense Beige Blonde & Very Light Intense Beige Blonde
10CB	10.02	Ultra Sheer Beige Blonde - close match

The Golds	Golden Tones - .3 for 100% gray coverage	Gold Base
3G	4.3	Golden Brown
4G	1pt 4.3 : 1pt 5.3	Golden Brown & Light Golden Brown
5G	1pt 5.3 : 1pt 6.3	Light Golden Brown & Dark Golden Blonde
6G	1pt 6.3 : 1pt 7.3	Dark Golden Blonde & Golden Blonde
7G	1pt 7.3 : 1pt 8.3	Golden Blonde & Light Golden Blonde
8G	1pt 8.3 : 1pt 9.3	Light Golden Blonde - Very Light Golden Blonde
10G	10.03	Ultra Sheer Golden Blonde
HLG	903	Ultra Light Blonde, mixes 1:2 30 or 40 volume developer
UTG	NA	NA
The Warm Beiges	Golden & Copper Tones	Gold & Orange Bases
5WB	1pt 5.3 : 1pt 6.34	Light Golden Brown & Dark Golden Copper Blonde
6WB	6.34	Dark Golden Copper Blonde
7WB	1pt 6.34 : 1pt 8.34	Dark Golden Copper Blonde & Light Golden Copper Blonde
8WB	8.34	Light Golden Copper Blonde
10WB	1pt 10.03 : 1pt 10.04	Ultra Sheer Golden Blonde & Ultra Light Copper Blonde
The Reds	Copper Tones	Orange Base
7OR	7.4	Copper Blonde - close match

Red Orange	Copper & Vibrant Red Tones	Orange & Red Bases
4RO	1pt 4.4 : 1pt 5.6	Copper Brown & Light Red Brown - close match
5RO	1pt 5N : 2pts 6.64	Light Brown & Dark Red Copper Blonde - close match
6RO	6.64	Dark Red Copper Blonde
8RO	1pt 8N : 2pts 7.64	Light Blonde & Red Copper Blonde
Red	Vibrant Red Tones	Red Base
4R	1pt 4N : 1pt 5.6	Brown & Light Red Brown - close match
5R	1pt 6N : 1pt 5.6	Dark Blonde & Light Red Brown
6R	1pt 7N : 1pt 5.6	Blonde & Light Red Brown
8R	NA	NA
Red Red	Vibrant Red Tones	Red Base
6RR	6.66	Dark Intense Red Blonde
Red Violet	Vibrant Red & Cool Fashion Tones	Red & Violet Bases
4RV	1pt 4.20 : 1pt 5.6	Bright Beige Brown & Light Red Brown - may appear brighter
5RV	1pt 5.6 : 1pt 5.7	Light Red Brown & Light Violet Brown
6RV	1pt 7.5 : 1pt 5.6	Mahogany Blonde & Light Red Brown - close match
8RV	NA	NA

SCHWARZKOPF IGORA TO CHROMASILK COLOR CONVERSION SHEET

Schwarzkopf	ChromaSilk	Notes
Natural Tones	Natural Tones - 100% gray coverage	Slight Blue Base
1-0	1N	Black
3-0	3N	Dark Brown
4-0	4N	Brown
5-0	5N	Light Brown
6-0	6N	Dark Blonde
7-0	7N	Blonde
8-0	8N	Light Blonde
9-0	9N	Very Light Blonde
10-0	10N	Extra Light Blonde
Intensive Natural	Natural Tones - 100% gray coverage	Slight Blue Base
5-00	4N	
6-00	5N	
7-00	6N	
8-00	7N	
9-00	8N	
Cendré	Natural Tones	Slight Blue Base
1-1	1N w/ Ash Blue Corrector	Black & 1 inch Ash Blue Corrector / 1 oz. color for starting levels 3-5
3-1	3N w/ Ash Blue Corrector	Dark Brown & 1 inch Ash Blue Corrector / 1 oz. color for starting levels 3-5
4-1	4N w/ Ash Blue Corrector	Brown & 1 inch Ash Blue Corrector / 1 oz. color for starting levels 3-5
5-1	5N w/ Ash Blue Corrector	Light Brown & 1 inch Ash Blue Corrector / 1 oz. color for starting levels 3-5
6-1	6N w/ Ash Blue Corrector	Dark Blonde & 1 inch Ash Blue Corrector / 1 oz. color for starting levels 3-5
7-1	7N w/ Ash Blue Corrector	Blonde & 1 inch Ash Blue Corrector / 1 oz. color for starting levels 3-5
8-1	8N w/ Ash Blue Corrector	Light Blonde & 1 inch Ash Blue Corrector / 1 oz. color for starting levels 3-5
9-1	NA	NA
10-1	NA	NA
Beige	Fashion & Fashion Ash Tones	Cool Gold and Blended Cool Green Bases
5-4	5.31	Light Golden Ash Brown
6-4	6.23	Dark Beige Golden Blonde
7-4	7.31	Golden Ash Blonde
8-4	8.31	Light Golden Ash Blonde

9-4	9.13	Very Light Ash Golden Blonde
10-4	10.13	Extra Light Ash Golden Blonde
Gold	Golden Tones - .3 for 100% gray coverage	Gold Base
4-5	5.3	Light Golden Brown
5-5	6.3	Dark Golden Blonde
6-5	7.3	Golden Blonde
7-5	8.3	Light Golden Blonde
8-5	9.3	Very Light Golden Blonde
9-5	1 pt 9.3 & 1 pt 9.03	Light Golden Blonde & Very Light Sheer Golden Blonde - close match
10-5	10.03	Ultra Sheer Golden Extra Light Blonde
Gold Copper	Copper Tones	Golden Orange Base
4-57	1pt 4N : 1pt 6.34	Brown & Dark Golden Copper Blonde
7-57	8.34	Light Golden Copper Blonde
Chocolate	Natural, Copper, Vibrant Red & Golden Tones	Cool Blue, Orange, Red & Gold Bases
3-68	1pt 3N : 1pt 4.4	Dark Brown & Copper Brown
4-68	2pts. 4N : 1pt 5.6	Brown & Light Red Brown
5-68	2pts 5N : 1pt 5.66	Light Brown & Light Intense Red Brown
6-68	1pt 6N : 1pt 6.66	Dark Blonde & Dark Intense Red Blonde
8-65	1pt 9.3 : 1pt 8.34	Very Light Golden Blonde & Light Golden Copper Blonde
Copper	Copper Tones	Orange Base
5-7	6.46	Dark Copper Red Blonde
6-7	7.4	Copper Blonde
7-7	7.43	Copper Golden Blonde
8-7	NA	NA
9-7	NA	NA
Extra Red	Vibrant Red Tones	Red Base
4-88	1pt 4N : 1pt 5.62	Brown & Light Red Violet Brown - close match
5-88	5.62	Light Red Violet Brown
6-88	6.66	Dark Intense Red Blonde
Red Violet	Vibrant Red & Beige Tones	Red & Violet Bases
5-889	1pt 5.66 : 1pt 5.7	Light Intense Red Brown & Light Violet Brown - close match
6-888	6.66	Dark Intense Red Blonde
7-887	1pt 7.66 : 1pt 7.62	Intense Red Blonde & Light Red Violet Blonde



PRAVANA™

CONNECT

FOR SALON PROFESSIONALS

Visit **PRAVANAconnect.com** for an array of tools designed to help salon professionals with everyday coloring, styling and business building needs:

PRAVANA™  **180°**
educational videos

ChromaSilk™
HAIR COLOR CERTIFICATION PROGRAM

**FAVORITE FORMULAS
& STYLING VIDEOS**

 **COST COMPARISON
CALCULATOR**

**BUSINESS-BUILDING AND SALON
MERCHANDISING MATERIALS**

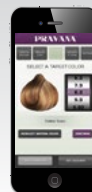
 **DOWNLOAD THE PRAVANA™ APP TODAY!**

 **HAIR COLOR
FORMULATOR**

- Easily formulate hair color
- Tips on retouching, virgin color application and gray coverage
- Complete virtual swatchbook

 **COST COMPARISON
CALCULATOR**

- Find out how much you can save by switching to ChromaSilk
- Cost per mixed ounce
- Mixing ratios



Available on the
App Store

ANDROID APP ON
Google play



PRAVANA™

NEVO

SUPER ANTIOXIDANT-RICH FORMULA
MITIGATES FREE RADICALS TO PRESERVE
THE HAIR'S INTEGRITY AND PROTECT COLOR.



SUPER-NATURAL COLOR CARE

100% BIODEGRADABLE | 100% VEGAN | 100% GLUTEN-FREE | 5% TO FIGHT CANCER

ChromaSilk *Vivids* COLOR PROTECT

KEEP YOUR *Vivids* VIVID!

ChromaSilk VIVIDS Color Protecting Shampoo, Conditioner and Shine Spray are specifically formulated to work with the very special cationic dye system employed in VIVIDS Collection colors.



©2016 PRAVANA All Rights Reserved. 1-855-PRAVANA. | 02/2016 | To learn more, please visit www.pravana.com

PRAVANA CONNECT |     | Item # PL0002

